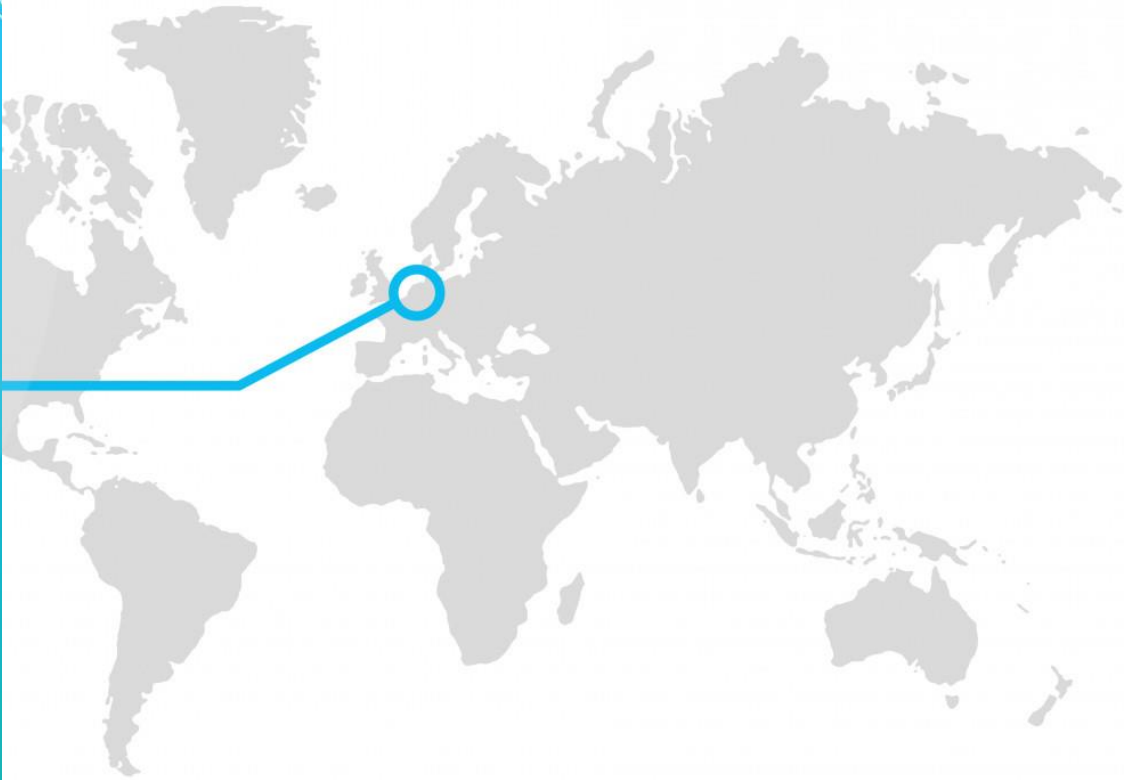


**TOP  
DUTCH**  
Naturally leading  
the transition



# WATERTECH



# WATERTECH

We enjoy **an abundance of fresh and mineral water**. However, located below sea-level and having a wet climate, in the Netherlands we've also always had a struggle with water, steering us towards innovative water projects. Over the years, we've expanded our expertise from building topnotch water infrastructural projects to keep ourselves safe, to **developing the best water quality treatment technologies**, serving households and industries across the globe. The knowledge-intensive European water technology hub located in Leeuwarden offers a complete **chain of innovation**. Today, TopDutch is deepening its focus on R&D and innovation for new technologies, in collaboration with several global water hubs. Here, **we test the waters**.

**1.**

**WaterTech  
Capital of Europe**

**2.**

**Complete Chain of  
Innovation**

**3.**

**Access to EU  
& International  
Markets**

**4.**

**Breeding Ground  
for Technological  
Partnerships**

**5.**

**Access to Talent &  
Highly Skilled  
Labor**



**1. WATERTECH CAPITAL OF  
EUROPE**



# EUROPE'S CAPITAL

Our city of Leeuwarden is globally recognized as the **WaterTech Capital of Europe.**

- It is home to the WaterCampus, which drives innovation in WaterTech both internally and externally.
- WaterCampus is home to five education/training institutes and 25 companies.
- WaterCampus has direct connections to 25 European universities and research institutes and 200 companies.

# European Node of Global Watertech Hub Alliance

**13**

**Universities /  
research  
centers**  
in the Netherlands

**9**

**Universities**  
in Europe

**5**

**Global  
WaterTech Hub  
Alliance**  
partners



**2. COMPLETE CHAIN OF  
INNOVATION**



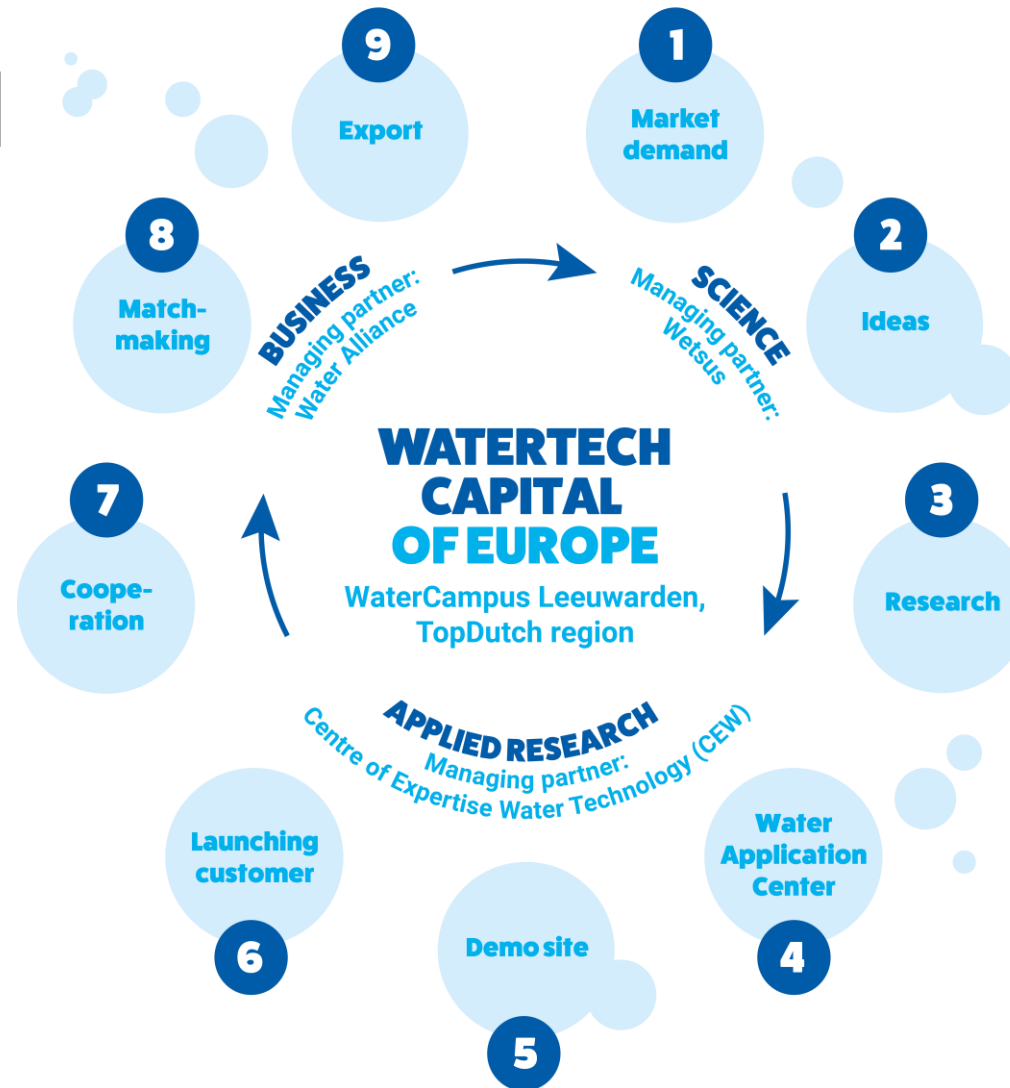


# INNOVATION CHAIN

WaterCampus offers a complete chain of innovation: from **science, to applied research and business**, all from one attractive business location.

- Science partner – Wetsus.
- Applied Research partner - Center of Expertise Water Technology (CEW).
- Business partner - Water Alliance.

# A COMPLETE CHAIN OF INNOVATION



## 1. Market demand

- Direct access to European market via the European Hub location
- Access to international market via Global Water Tech Hub Alliance

## 4. Water Application Center

- 6 applied research themes
- Unique triple helix collaboration
- Four physical facilities available

## 7. Cooperation

- 237 network partners
- 109 international projects
- 5 international hub partners

## 2. Ideas

- World class education & lifelong learning
- Yearly waterSEED challenge
- Two Global WaterTech Hub Alliance challenges
- Pre-seed funding available

## 5. Demo sites

- 5 demo sites

## 8. Matchmaking

- 18 organized events
- 35 international conferences
- 29 received company & 16 trade visits

## 3. Research

- 24 research themes
- >100 research projects
- 83 patent applications
- 33 spin-offs

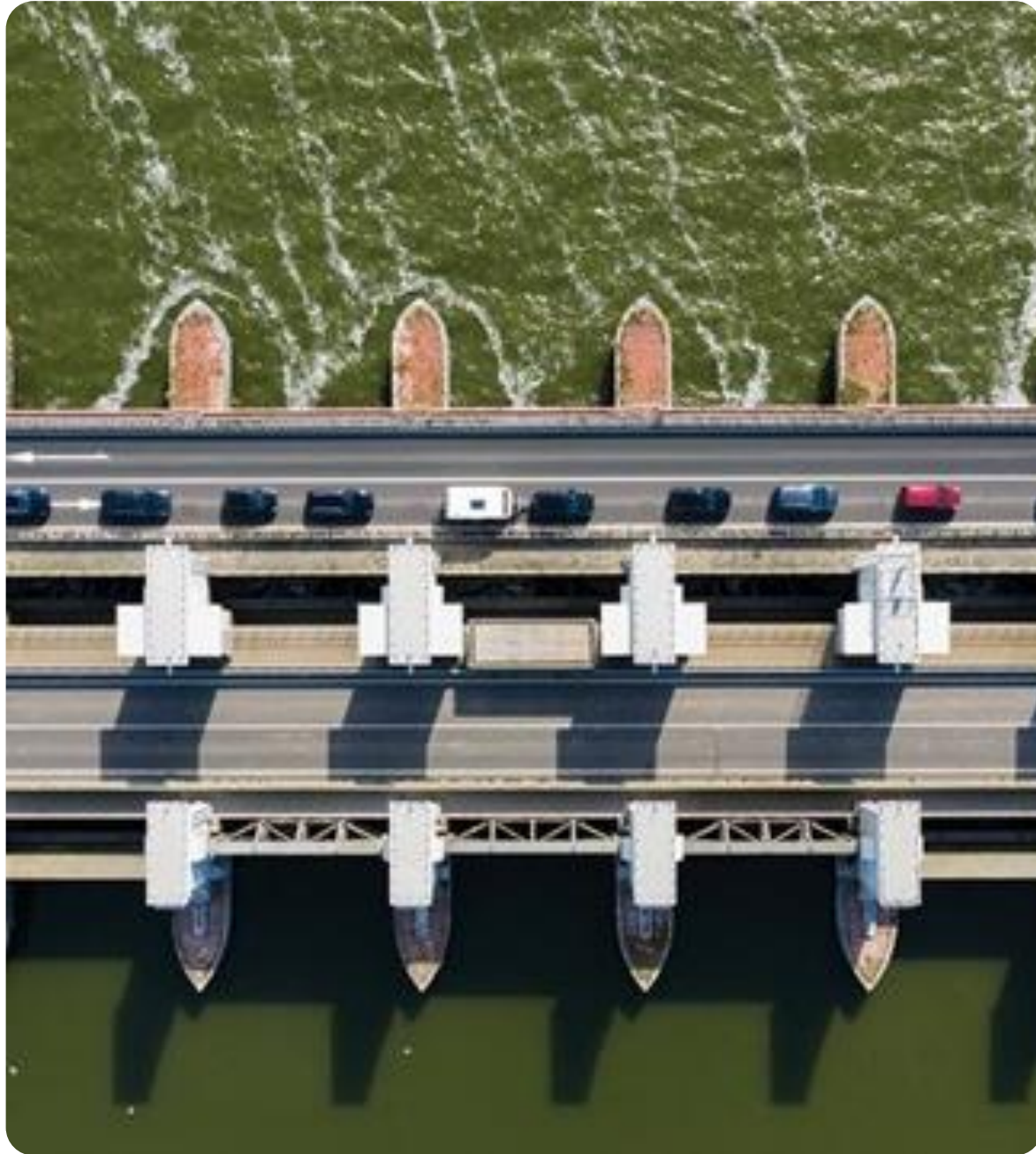
## 6. Launching customer

- Launching government
- 3 incubator programs
- 3 business funding partners

## 9. Export

- 75% companies exporting activities
- Export quote WaterTech: 35-40%

# **3. ACCESS TO EUROPEAN AND INTERNATIONAL MARKETS**



# INTERNATIONAL MARKET ACCESS

We have the best network to provide you access to the **European and international** markets.

- Your European business network partner is WaterAlliance.
- WaterAlliance is your European partner in the Global WaterTech Hub Alliance.
- Explore matchmaking opportunities. WaterAlliance organize, support or highlight many international conferences, visits and other matchmaking events.



**4. A BREEDING GROUND FOR  
TECHNOLOGICAL  
PARTNERSHIPS**



# TECHNOLOGICAL PARTNERSHIPS

We have the best **network** to provide you access to the **European and international markets**.

- Partner with Wetsus for groundbreaking scientific research with leading researchers from multiple universities.
- Partner with CEW to develop your first prototype, set up a pilot, accelerate the innovation cycle or shorten your time to market.
- Partner with international or local technology partners for turn-key water management solutions through Water Alliance's business network.



**5. ACCESS TO TALENT &  
HIGHLY SKILLED LABOR**





# ACCESS TO TALENT & SKILLS

The TopDutch region offers a lifelong learning program in **WaterTech** to develop a highly skilled workforce that enable international companies to realize their **growth ambitions**.

- Lifelong WaterTech learning program from primary school to PHD and MBA level.
- Wetsus graduates on average 40 highly and uniquely skilled WaterTech specialists a year.
- Water Alliance supports growth ambitions by connecting industry to talent.



# ENJOY LIFE IN THE TOPDUTCH REGION

- Our landscape is a great mix of **dynamic cities** and **tranquil countryside**. Our residents can enjoy all the benefits of city life, while still being surrounded by beautiful nature.
- We're also less crowded than the western part of the Netherlands, but we are only 90 minutes away from Amsterdam. Here we have **less traffic, cleaner air, lower costs of living and less stress**.
- Explore our cultural and music festivals, such as *Oerol* and *Noorderzon*, check out our exciting sports events at *TT Circuit Assen*, get away for the weekend in our iconic nature to the *Wadden Islands* or the *Frisian waters*, eat your favorite foods at the best places and enjoy the fun social activities planned every week with your friends and family.
- We're a seriously **great place to live** - proven by the fact that the city of Groningen is ranked as the 5th happiest place on earth by the World Happiness Report!



Are you interested **in exploring**  
**what your business possibilities**  
could be?

**Reinder de Jong**  
**Project Manager AgriFood**

dejong@nom.nl

+31 6 255 472 73

# JOIN TOPDUTCH

Want to find out more **how the TopDutch**  
**region is naturally leading the transition?**  
Head over to our website: [www.topdutch.com](http://www.topdutch.com)

**TOPDUTCH.com**

**Naturally leading the transition**